

# GROUND WATER NEWS

## Ground Water Services

SPAGEO Group offers you access to this large global network of multidisciplinary scientific and engineering professionals while providing you with an integrated and dedicated project team carefully selected to address your specific groundwater needs.

## Ground Water Regulation and Management

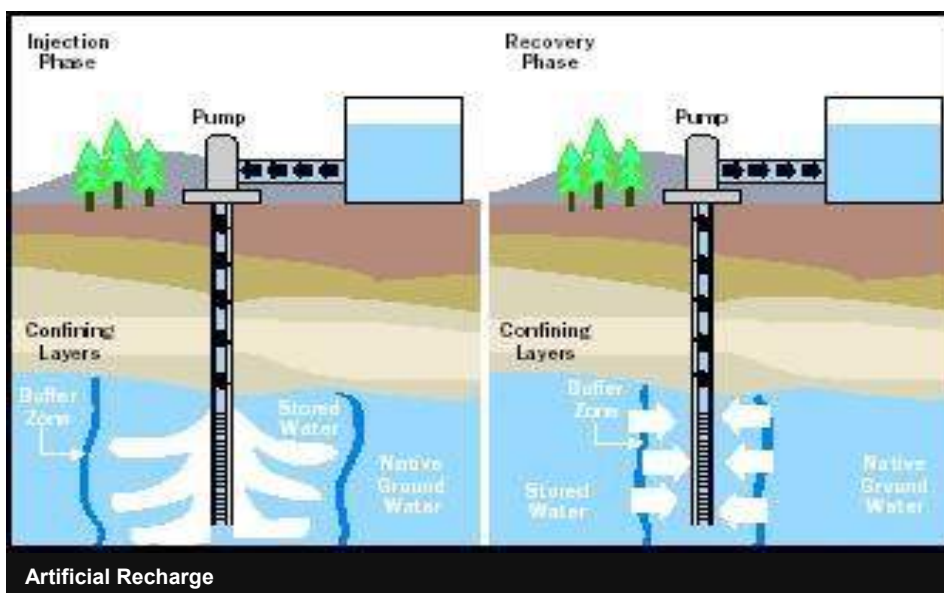
We have specialists working in the field of Hydrogeology and helping industries to develop ground water model and reports and defending the case on behalf of industries in the Central Ground Water Authority (Section 3 (3) of the Environment (Protection) Act, 1986 ) for its regulation and control development and management of ground water resources in the country.

## Ground water Resources

Our Ground water experts are renowned consultants, mostly served in various water resources agencies including CGWB/WAPCOS/CWC/State Ground water Departments.

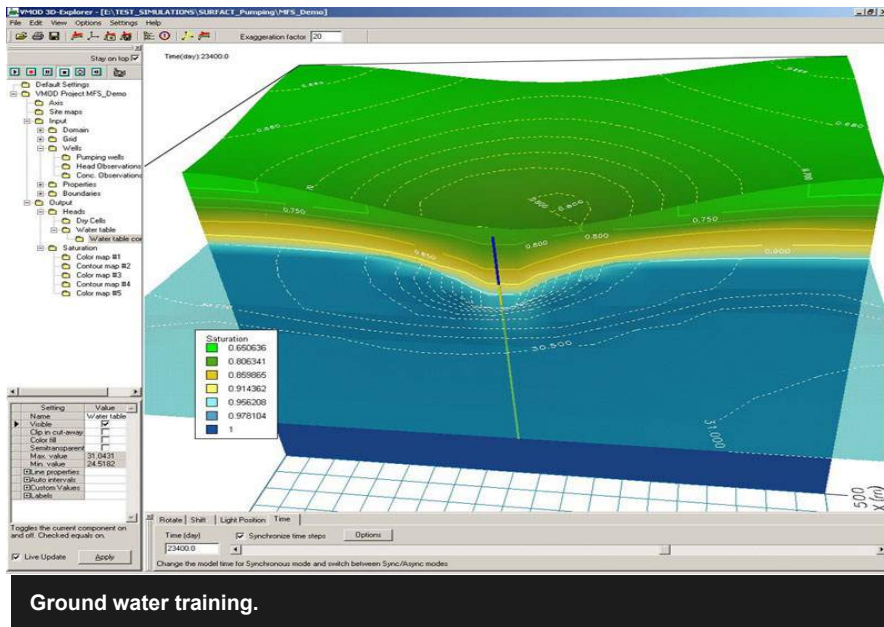
*“SPAGEO provides time bound, confirmatory consulting & advisory services, they have excellent ground water knowledge and their approach for the CGWA permission is very professional.”*

*- Uttam Sugar Mill*



## In This Issue

- Ground water Studies
- Ground water permission from CGWA
- Ground water modeling
- Ground water pollution



## Ground water modelling training

SPAGEO has conducted ground water modelling training in 21st to 25th Sept 2015. This was attended by the 20 resources from India and africa.

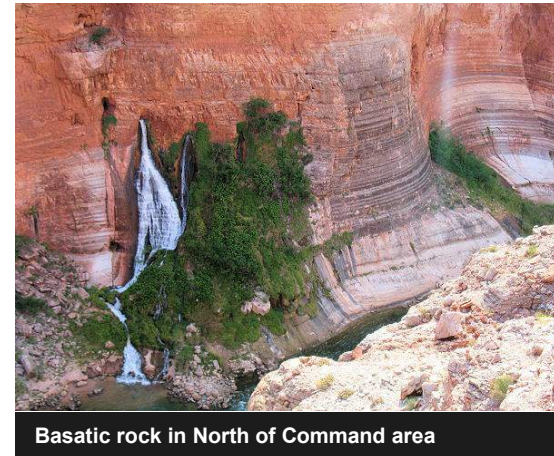
The training course was appreciated by variety of people as it is first of its own kind initiative.

We are aiming to participation from Municipalities/ ULB/ Water engineers/ Urban planner for the next session, which shall be announced soon.

## Hydrogeological Studies for Tapi Mega Recharge Project

TIDC has proposed the Mega Recharge Scheme in Tapi basin which envisages the construction of low diversion weir at Khariya Gutli Ghat dam site comprising of a right bank flood canal of about 232 Km. long, running along the fault through pervious Bazada zone having capacity of 5000 Cusecs. During monsoon season the flood waters from the canals will be released in rivers, nallas through escapes to recharge the area in bazada zone by providing minor water conservation and artificial recharge structures.

One of the components of feasibility report is the hydrogeological studies in parts of Tapi basin in areas proposed under Phase-I A and I B covering about in covering 2694 sq.kms in States of Maharashtra (1484 sq.km) and Madhya Pradesh (1210 sq.km).



## New Technologies– Remote Sensing

We have been advising the ground water recharge and regulation, seeing the current water crisis in the region. The bazada is good for the recharging the aquifer from the surface water. The Remote Sensing studies will help TIDC to locate the bazada both vertically and laterally.

## New Technologies– Haliborne TDEM

The haliborne Time Domain Electromagnetic and Total Magnetic field survey and analysis and interpretation at 250 meter to develop 3d hydrostratigraphic model of the comman area.

## Ground Water-pollution

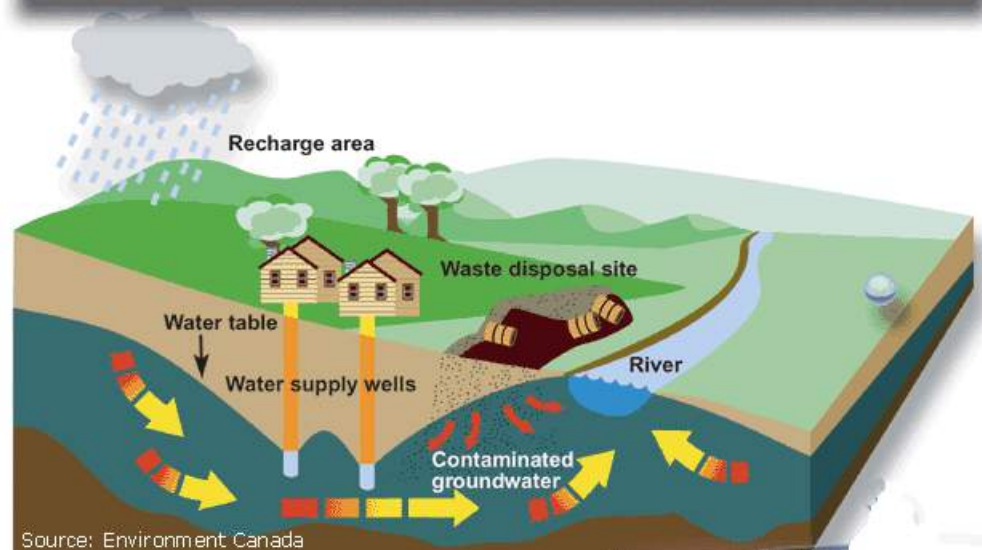
People have now realized the hazards associated with ground water pollution, be it industry for landfill or any human made activity or geogenic cause, the ground water pollution is area of big concern.

SPAGEO helps our customer to study and model and develop scenarios ground water pollution ( solute transport modelling).

Our services and results are proven in the court of law and in federal and state governments.

We do with federal and state Ground water department or other agencies who are responsible for the issuance of Ground water pollution clearance for our customers.

## Groundwater contamination from a waste disposal site



### Ground water modelling training

## Hydrogeology Services

Golder's hydrogeological services include all aspects of the characterisation, assessment, design, implementation and management for:

- Groundwater exploration and supply development
- Aquifer storage and recovery (ASR), managed aquifer recharge (MAR) and river bank filtration (RBF)
- Wellfield optimization
- Regional groundwater flow and wellhead protection
- Mine and construction dewatering
- Geothermal energy
- Groundwater remediation

# SPAGEO GROUP

SPAGEO has become the group companies encompassing following companies:

1. **SPA GEO TECHNOLOGIES PVT LIMITED** – Responsible for the Geospatial and data management Technologies
2. **XONNI SYSTEMS PVT LIMITED**– Responsible for the Software development and Enterprise IT projects.
3. **CONSULTING GEO INFO SYSTEMS**– Responsible for the geoscience consulting projects.

We are innovative and developing State of the art technologies products

We have developed products Kisanapp and Global Performance Index. We are also looking at raising funds for these two products.

## Contact Us

Give us a call for more information about our services and products

### **SPA GEO TECHNOLOGIES PVT LIMITED**

8A, third floor, Mahaluxmi Metro Tower, C2, Sector-4, Vaishali, Ghaziabad

### **XONNI SYSTEM S PVT LIMITED**

G-126, Sector– 63

NOIDA ( UP)

91-120-4567200

[alok@spageo.co.in](mailto:alok@spageo.co.in)

**SPA GEO TECHNOLOGIES PVT LIMITED brings you the water**

PLACE  
STAMP  
HERE

**Address**